



瑞博医疗
REBORN MEDICAL



绍兴瑞博医疗器械有限公司
Shaoxing Reborn Medical Devices Co.,Ltd.

关注生命！关爱健康！瑞博医疗为您提供优质的产品及服务
www.reborn-med.com



关于我们

公司简介

绍兴瑞博医疗器械有限公司位于中国著名历史文化名城-绍兴，是一家拥有自主知识产权的医疗器械科技型生产企业。专业从事一次性使用麻醉通气、呼吸治疗类产品的设计研发、生产销售等。公司通过与国内著名院校合作，不断优化产品性能，在市场上赢得了良好的口碑。主要产品包括：密闭式吸痰管、麻醉呼吸回路、麻醉面罩、氧气面罩、雾化面罩、呼吸囊、湿化瓶、人工鼻、细菌病毒过滤器。

公司核心管理层拥有多年的医疗器械生产企业实践经验，成功打造了专业的技术研发团队、严谨的质量控制团队、高效的营销服务团队。公司通过了最新ISO13485：2016国际质量体系认证，产品获得CE欧盟医疗器械认证，并获得多项国家专利。公司强大的模具制造实力和临床方面经验，能为客户提供满意的产品定制服务。与此同时有效地缩减产品研发周期，降低产品制造成本，增强了公司客户的市场竞争力，最终与客户共谋发展，创造社会价值！

“为了您的健康”是公司秉承的核心理念。坚持走专业化道路，引入国际先进理念和技术，积极开发新型医疗器械产品。摒弃中国国内小众企业普遍低技术、劳动密集型的加工型模式，成为一家新型科技型医疗器械生产企业，力争成为细分领域的领跑者。为人类健康事业做出贡献！

About Us

→ Company Introduction

Shaoxing Reborn Medical Devices Co.,Ltd. , Located at famous historical city-- Shaoxing, is a high-tech medical enterprises with private intellectual property, specialized in developing, producing and marketing the disposable products in Anesthesia, Airway management and Respiratory Therapy. Products range covers : Closed suction tube, Anesthesia breathing circuit, Anesthesia mask, Oxygen mask, Nebulizer mask, Reservoir bag, Breathing filter etc.

All of our products has obtained CE & ISO 13485:2016, and some of them with National Patent. Meanwhile, with strong force of molding and clinical experience, we provide our customers with satisfactory OEM Service. Besides, with the professional and effective team of Innovation, Quality Management and Marketing, we can help customers shorten the products developing periods and reduce the cost to enhance their marketing competitiveness, and finally reach mutual benefits.

With the core ideology of “ Quality First, Customer Uppermost ”, Reborn Medical intent to be the well-known brand in the field of Anesthesia and Respiration. Let's join hands and create a much healthier world!

Where healing begins 

Enterprise Qualification

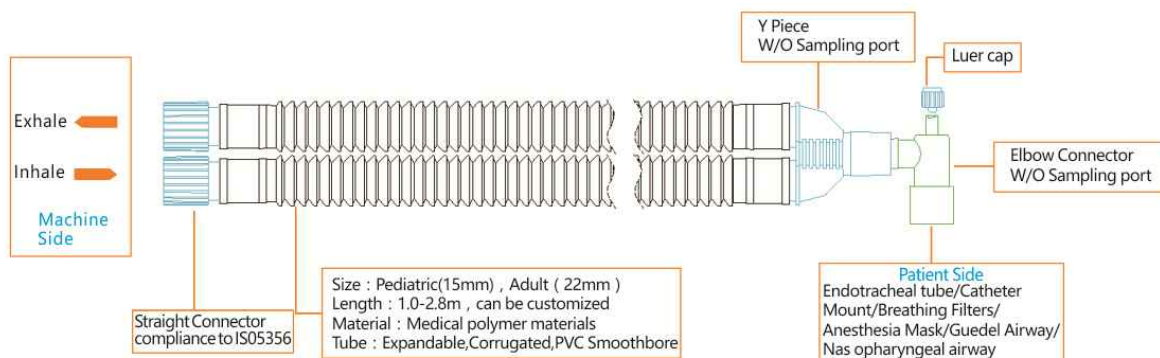


Quality Policy

Quality Guarantee, Satisfactory Service, Life Supreme







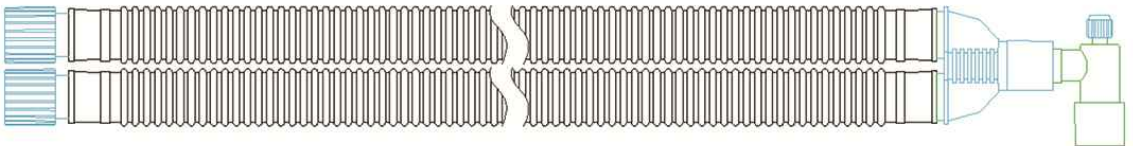
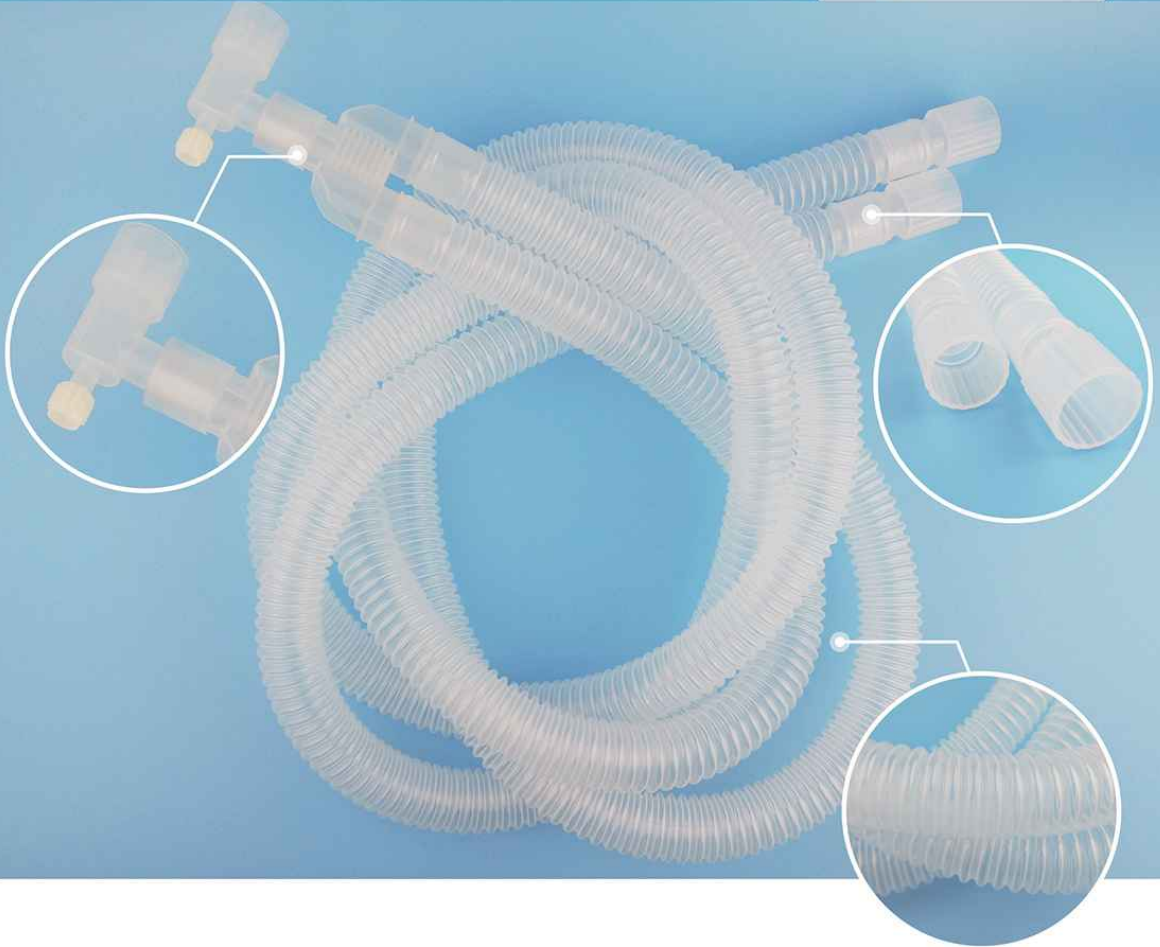
Application

- Used for Anesthesia Machine and Ventilator, building artificial airways for patients.

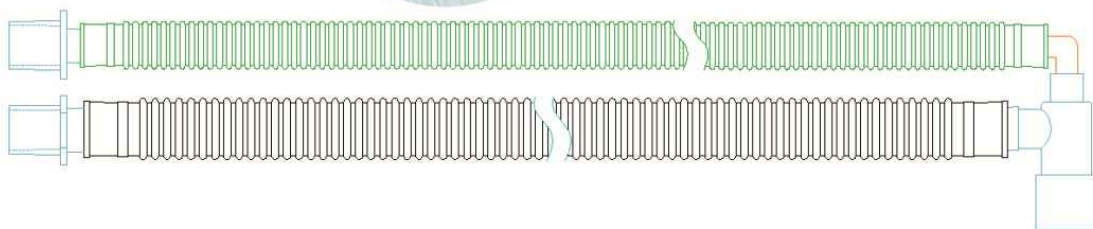
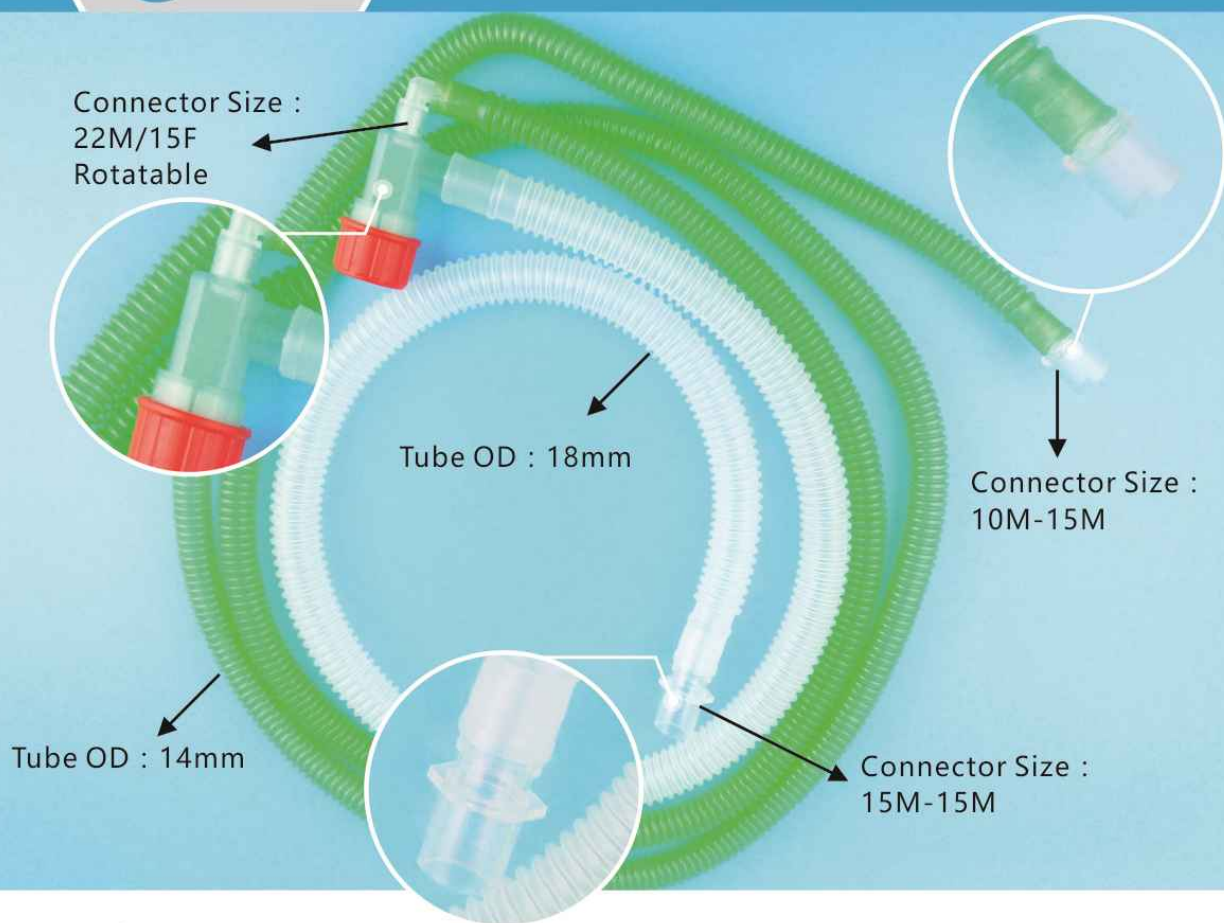


Performance

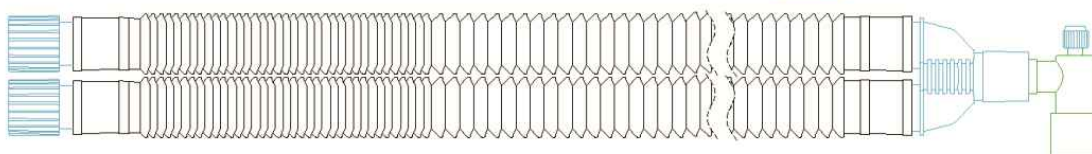
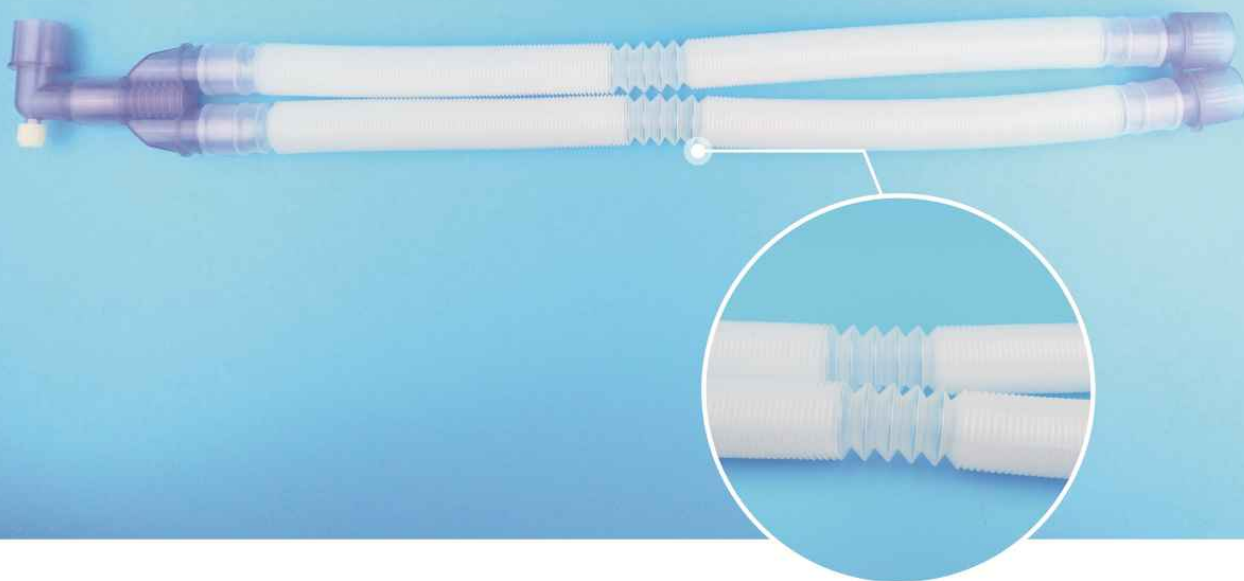
- Intensity: connectors and tubes should not be separated under 45N pressure.
- Leakage: less than 50ml/min.
- Compliance: not exceed 10ml/kpa of each meter under 6kpa pressure.
- Sterilization: should be E/O Sterile, validity 2 years
- E/O residues: less than 10µg/g.



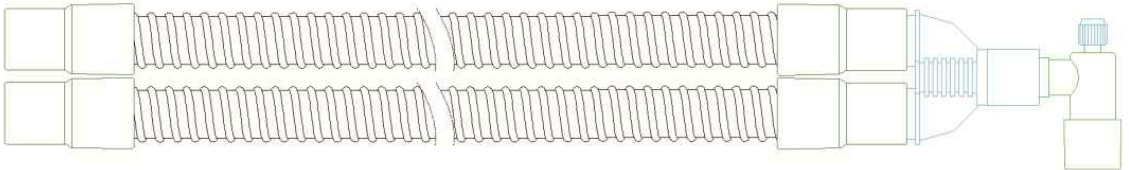
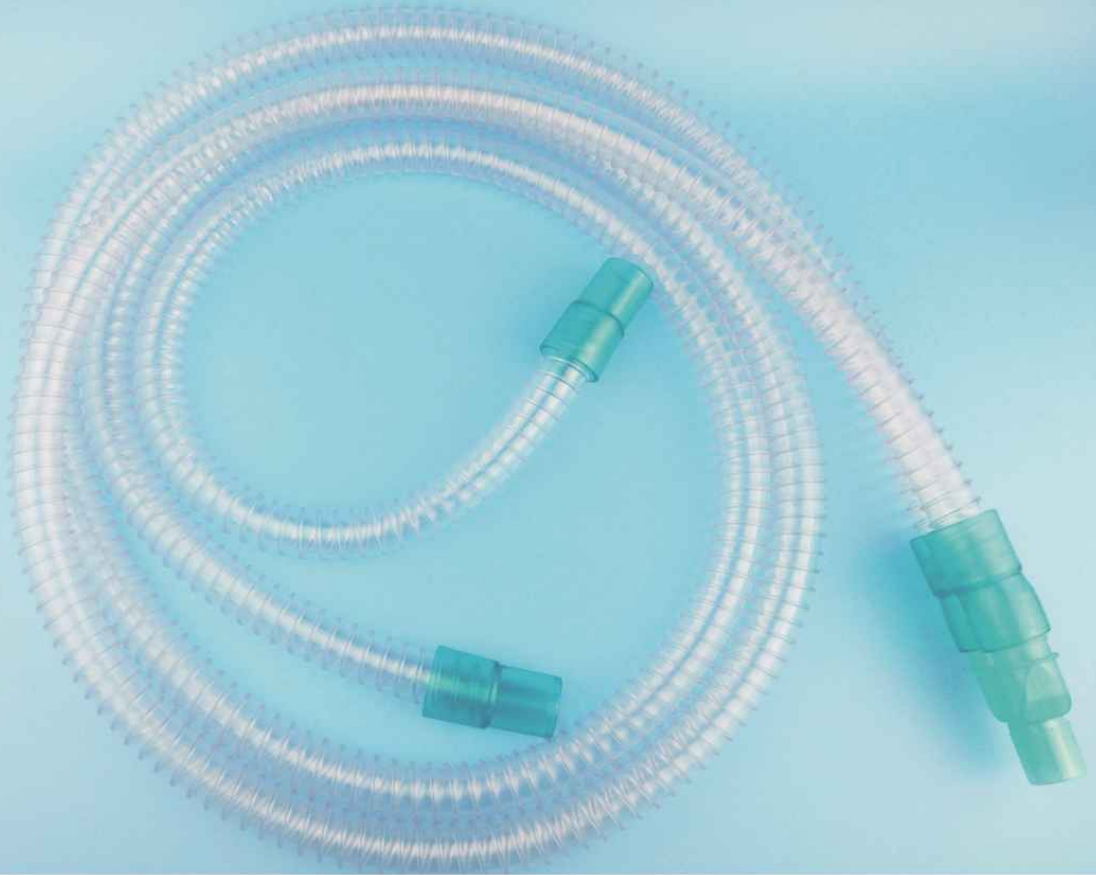
- Soft and flexible tube, excellent winding and pressure resistance and low compliance.
- Connectors meet standard of ISO 5356
- Tube size: Adult(22mm), Pediatric(15mm)
- Length can be customized, from 1.2m-3.0 m
- Can be used with all kinds of accessories, like anesthesia mask, breathing bag etc.
- Package: Paper-plastic bag/ middle-sealed bag/ PE bag
- QTY/CTN: 20pcs
- Inspection report together with Goods



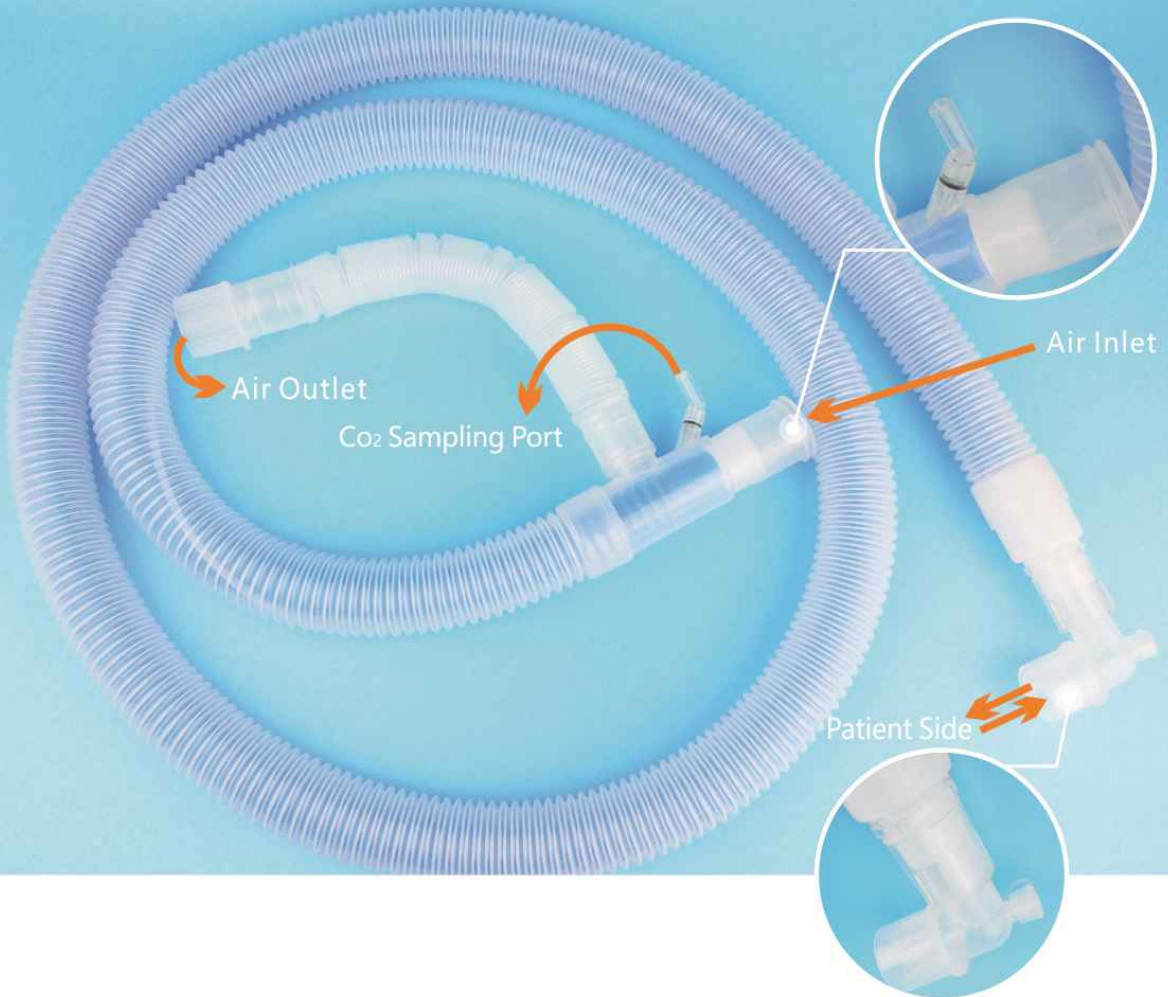
- Soft and flexible tube, excellent winding and pressure resistance and low compliance.
- Connectors meet standard of ISO 5356
- Consists of 15mm and 12mm corrugated tube
- Length can be customized, from 1.2m-3.0 m
- Can be used with all kinds of accessories, like anesthesia mask, breathing bag etc.
- Package: Paper-plastic bag/ middle-sealed bag/ PE bag
- QTY/CTN: 40pcs
- Inspection report together with Goods



- Flexible length and angle adjustment to meet different body positions.
- Connectors meet standard of ISO 5356
- Tube size: Adult(22mm), Pediatric(15mm)
- Length can be customized, from 1.2m-3.0 m
- Can be used with all kinds of accessories, like anesthesia mask, breathing bag etc.
- Package: Paper-plastic bag/ middle-sealed bag/ PE bag
- QTY/CTN: 50pcs
- Inspection report together with Goods



- Soft PVC Tube with winding strips
- Effectively avoid tubes to be flattened, smooth inner tube with low air flow resistance
- Connectors meet standard of ISO 5356
- Tube size: Adult(22mm), Pediatric(15mm)
- Length can be customized, from 1.2m-5.0 m
- Can be used with all kinds of accessories, like anesthesia mask, breathing bag etc.
- Package: Paper-plastic bag/ middle-sealed bag/ PE bag
- QTY/CTN: 20pcs
- Inspection report together with Goods



- Suitable for Mechanical and Manual control as well as autonomous respiration.
- Less inhalation of CO₂, small size makes operation convenient
- Connectors meet standard of ISO 5356
- Consists of 30mm and 15mm corrugated tube.
- Length can be customized, from 1.2m-3.0 m
- Can be used with all kinds of accessories, like anesthesia mask, breathing bag etc.
- Package: Paper-plastic bag/ middle-sealed bag/ PE bag
- QTY/CTN: 50pcs
- Inspection report together with Goods



Coaxial Circuit (APL Valve)



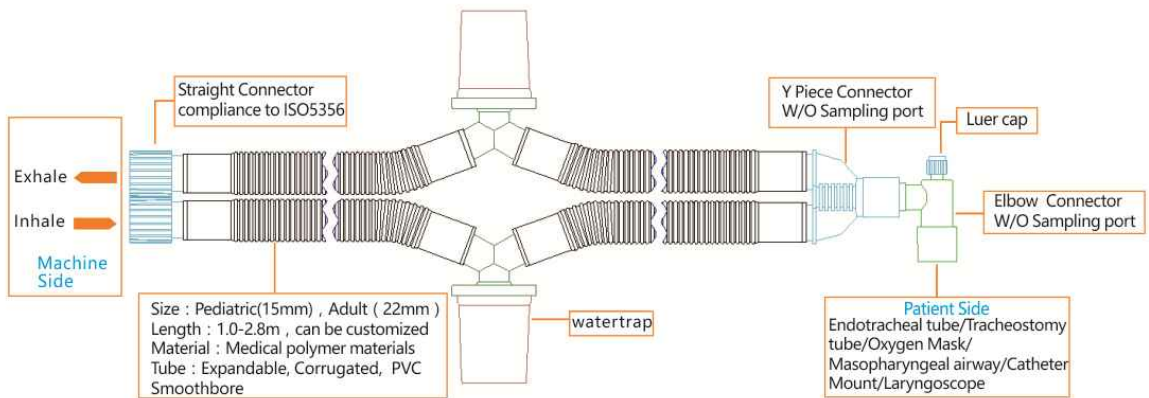
- Suitable for Mechanical and Manual control as well as autonomous respiration.
- APL valve can adjust the pressure of the tube, and protect the lung of patients
- Connectors meet standard of ISO 5356
- Consists of 22mm corrugated tube and 10mm smoothbore tube.
- Length can be customized, from 1.2m-3.0m
- Can be used with all kinds of accessories, like anesthesia mask, breathing bag etc.
- Package: Paper-plastic bag/ middle-sealed bag/ PE bag
- QTY/CTN: 50pcs
- Inspection report together with Goods



Coaxial Circuit (PVC Smoothbore)



- Soft PVC Tube with winding strips
- Effectively avoid tubes to be flattened, smooth inner tube with low air flow resistance
- Connectors meet standard of ISO 5356
- Consists of PVC Smoothbore tube (32mm) and corrugated tube (15mm)
- Length can be customized, from 1.2m-5.0 m
- Can be used with all kinds of accessories, like anesthesia mask, breathing bag etc.
- Package: Paper-plastic bag/ middle-sealed bag/ PE bag
- QTY/CTN: 50pcs



The breathing circuit is the delivery systems which conduct anaesthetic gases from an anaesthetic machine to the patient. The watertrap can collect the water in the breathing circuit and avoid the damage to patients and machines.



Breathing Circuit (Corrugated)



- Flexible length and angle adjustment to meet different body positions.
- Connectors meet standard of ISO 5356
- Tube size: Adult(22mm), Pediatric(15mm)
- Length can be customized, from 1.2m-3.0 m
- Used with 1 or 2 watertrap
- Package: Paper-plastic bag/ middle-sealed bag/ PE bag
- QTY/CTN: 20 pcs
- Inspection report together with Goods



Breathing Circuit (Smoothbore)



- Soft PVC Tube with winding strips
- Effectively avoid tubes to be flattened, smooth inner tube with low air flow resistance
- Connectors meet standard of ISO 5356
- Tube size: Adult(22mm), Pediatric(15mm)
- Length can be customized, from 1.2m-5.0 m
- Used with 1 or 2 watertrap
- Package: Paper-plastic bag/ middle-sealed bag / PE bag
- QTY/CTN: 20pcs
- Inspection report together with Goods



Breathing Circuit for Neonate (Corrugated)

- Flexible length and angle adjustment to meet different body positions.
- Connectors meet standard of ISO 5356
- Tube size: 15mm, 12mm
- Length can be customized, from 1.2m-3.0m
- Used with 1 or 2 watertrap
- Package: Paper-plastic bag/ middle-sealed bag/ PE bag
- QTY/CTN: 40 pcs
- Inspection report together with Goods





Catheter Mount

- Catheter Mount is an extended tube, connected between breathing circuit and artificial airway, used for patient sputum suction while ventilator is working and reducing the risk of pneumonia.



Instructions for Use

- Make sure the soft cap covers the suction port tightly and no leakage.
- Connect with Anesthesia breathing circuit.
- Open the suction cap while in medicine dropping or suction. Close the cap after use.



Catheter Mount Expandable



Catheter Mount Smoothbore



Catheter Mount Corrugated

Catheter Mount Expandable



Catheter Mount Smoothbore



Catheter Mount Corrugated





Functions of Breathing Filter

Used with ventilator and Anaesthesia Machine, filtering the bacteria, particle and humidify the air while breathing, so as to avoid the cross infection of the breathing system.



Introduction of pathogen

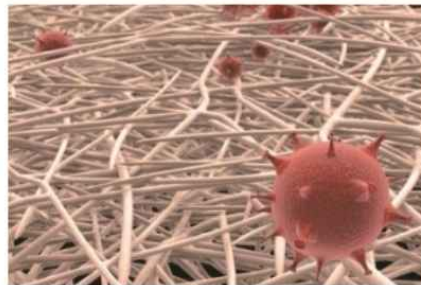
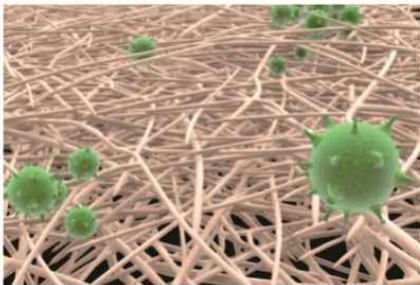
Bacteria and Virus always be diffused by air flow. And common pathogen including: Staphylococcus aureus, Pseudomonas aeruginosa, Tuberculosis bacillus, influenzavirus and hepatitis virus etc.







Principle of Filtering

Mainly can be divided into Mechanical filtering and electrostatic filtering

- Mechanical Filtering: prevent the large particles by overlaid of several high-density fiber paper. Can effectively filter large area, but air flow resistance is much larger.
- Electrostatic Filtering: absorbing the bacteria and virus by using the filtering fiber (with static). With smaller air flow resistance than mechanical filtering, but worse filtering effect.

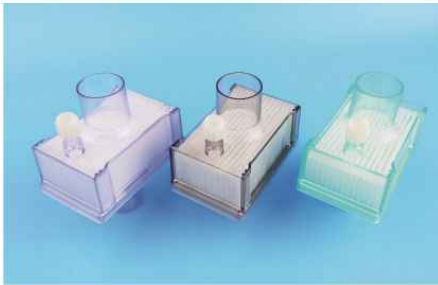


Used for patient side of Anesthesia Breathing circuits, keep the moisture and heat during inspiration and expiration. Suitable for brief therapy.

Size	Adult	Adult with angle	Pediatric	Neonate
Pic/Performance				
Shell Material	K-resin or PP	K-resin	K-resin	K-resin
Moisture Loss (Paper/Sponge)	15mg	15mg	12mg	10mg
Moisture Output (Paper/Sponge)	25mg/@500 VT	25mg/@500 VT	24mg/@500 VT	22mg/@500 VT
BFE	99.99%	99.99%	99.99%	99.99%
VFE	99.99%	99.99%	99.99%	99.99%
Airflow Resistance (DRY)	120 Pa	120 Pa	120 Pa	120 Pa
Airflow Resistance (WET)	150 Pa	150 Pa	150 Pa	150 Pa
Filtering Type	Electrostatic	Electrostatic	Electrostatic	Electrostatic
Tidal Volume	200-1500 ml	200-1500 ml	150-300 ml	70-150 ml
Dead Space	18ml	20ml	12ml	10ml
Weight	29g	31g	8g	6g
Connector	22F-22M/15F	22F-22M/15F	22F-22M/15F	15F-15M/8M
Sampling Port	Yes	Yes	Yes	Yes
Pc/ Carton	100PCS	100PCS	200PCS	200PCS



Mechanical Filter -HEPA type & Electrostatic Filter



Mechanical



Electrostatic



Electrostatic

	VFE	BFE	Airflow Resistance	Dead Space	Tidal Volume	connector	PCs/carton
HEPA (Mechanical)	99.99%	99.9999%	100 Pa	20ml	200-1500ml	22F-22M/15F	50PCS
Electrostatic	99.99%	99.99%	120 Pa	20ml	200-1500ml	22F-22M/15F	100PCS



Tracheostomy Filter



	VFE	BFE	Airflow Resistance	Dead Space	Tidal Volume	connector	PCs/carton
T shape	/	/	50 Pa	/	200-1500ml	15F	300PCS
With suction port	/	/	50 Pa	/	200-1500ml	15F-6% luer connector	300PCS





Defects of using opened suction tube

- Patients lose the support of PEEP immediately, may cause the leakage and damage of machines.
- Interrupt ventilation may decrease the oxygen saturation and cause the danger of anoxia.
- Bacteria may cause infection through catheter to patient's lung.
- Potential cross infection to doctors while patients coughing.
- Closed suction tube can effectively avoid above problem with lower integration cost.



Nebulizer Mask



Introduction	Nebulizer Mask consists of Mask body, connector, oxygen tube, Nebulizer, nose clip, elastic band. used for oxygen and medicine inhaling
Size	S /M/ L/XL
Type	Nebulizer Mask/ Nebulizer with mouth piece

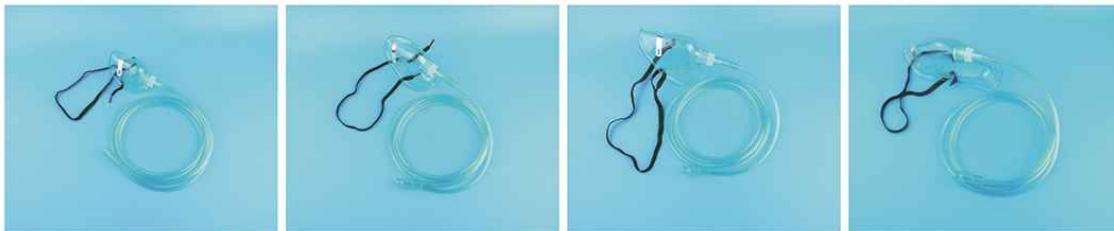


Instructions for Use

- Open the bag and take out the Nebulizer Mask.
- Fix the mask to patient's mouth and nose, adjust the tightness of the clip and elastic band, avoid leakage.
- Connect the oxygen tube with oxygen devices.
If patients feel stuffy, pls remove the small hole on the mask side.



Oxygen Mask



Introduction	Oxygen Mask consists of Mask body and connector, oxygen tube, adjustable kits, nose clip, elastic band. used for oxygen inhaling while connecting with oxygen devices.
Size	S /M/ L/XL
Type	Standard Oxygen Mask / Adjustable Venturi Mask/ Oxygen Mask with reservoir bag.



Instructions for Use

- Open the bag and take out the Oxygen Mask.
- Fix the mask to patient's mouth and nose, adjust the tightness of the clip and elastic band, avoid leakage.
- Connect the oxygen tube with oxygen devices.
If patients feel stuffy, pls remove the small hole on the mask side.



Anesthesia Mask



DEHP-Free, comply with the requirement of ISO10993.

- Transparent shell, convenient for monitoring.
- Cushion perfectly fit the patients face without leakage.
- Disposable use, avoid cross contamination.
- Standard 22/15mm connector meet requirement of ISO5356-1
- Product meet requirement of MDD/93/42/EEC
- Latex free.
- Size: Neonate, Infant, Pediatric, Adult (S), Adult (M), Adult (L)



Reservoir Bag



Made of Latex / latex free material,
size: 0.5L, 1L, 2L, 3L.



质量保证 顾客满意 生命至上

绍兴瑞博医疗器械有限公司

地址：绍兴滨海新城海天道21号医疗器械科技
产业园6号楼1楼

电话：0575-82999832

传真：0575-82999831

邮箱：sales@reborn-med.com

网址：www.reborn-med.com

Shaoxing Reborn Medical Devices Co.,Ltd.

Add: 1F, Building No.6, Medical Device Industrial Park,
No.21 Haitian Road, Binhai New Area, 312366
Shaoxing, Zhejiang, China

Tel: 0575-82999832

Fax: 0575-82999831

E-mail: sales@reborn-med.com

Website: www.reborn-med.com